

Class Zero Emission workshop materials

Roll-up displays



There are 6 rollups (215x120cm)

- » Class Zero Emission
- » International Polar Foundation
- » Polar Regions
- » Princess Elisabeth Antarctica
- » Energy management
- » GDF Suez

Expedition clothing

Polar clothing is used in the workshop to give an expedition feeling and also to highlight the importance of protection from the extreme cold temperatures and strong sunlight.



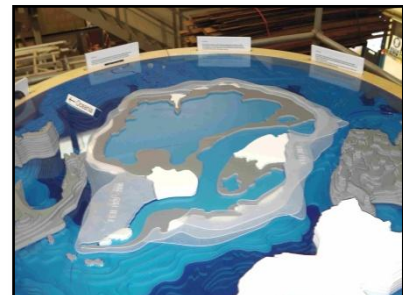
Polar puzzles

The polar puzzles clearly demonstrate the geography of both Polar Regions. Removable puzzle pieces include ice sheets, ice shelves, land masses and oceans. Features of the Arctic and the Antarctic can be compared and contrasted. There are sea ice overlays which show the amount of sea ice for three different summers and winters. Labels are available for countries and regions and figurines can be used to indicate features and characteristics. Each puzzle is around 1.2m diameter.

There is a set of notes which accompanies the puzzles to give further information and suggestions for presentations. There is also a picture book which provides supplementary information. Each puzzle has ten quiz cards which are mounted around the edge. Answers to the questions are on the back of each card.

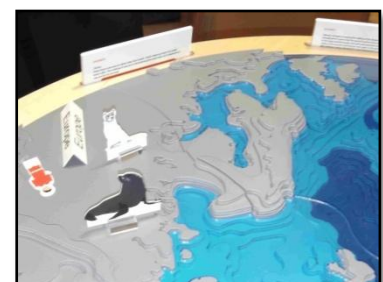
Antarctica

The Antarctic puzzle has a puzzle piece for the East and the West Antarctic Ice Sheets. There are three removable land areas. Sub glacial lakes are indicated as well as areas beneath the ice which are actually below sea level. There are separate pieces for the Indian, Pacific and Atlantic Oceans.



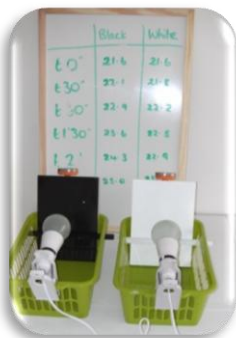
Arctic

The Arctic puzzle has removable pieces for Europe, North America, Russia and Greenland. The Greenland Ice Sheet is also removable. Smaller ice caps (Iceland, Ellesmere etc.) are fixed to the puzzle. Separate ocean sections represent different parts of the Arctic Ocean, North Atlantic and Pacific.



Experiments

Experiments have been set up for three different age groups (10-14, 14-18 and sixth form science). The experiment materials are labelled and packed together so that they are easy to set up. Lab coats in six different sizes are included in a set of bags stored in the field kit bag.



Albedo 1



Albedo 2



Palaeoclimatology



Acidification 1



Acidification 2



Ocean circulation

Model of “zero emission” Antarctic research station

This is a static model of the International Polar Foundation Princess Elisabeth Antarctica station. It shows the station, wind turbines, solar panels and satellite dish. It has a Perspex cover so the actual model cannot be touched. The model is 92x38x18cm.



Packing and shipping of equipment

The equipment is packed into 6 flight cases, 5 padded bags and one kit bag as shown below.



Six packing cases. These all have wheels on their bases so that they can be easily moved.

- 4 containing the puzzle pieces (117x70x26cm)
- 1 containing the station model (106x44x24cm)
- 1 containing the experiment materials (65x46x44cm)



Five padded bags containing the bases of the puzzles.

- 2 containing the table leg sections (90x65x18cm)
- 2 containing the table top sections (123x65x20cm)
- 1 containing the circular base pieces (70x70x8cm)



Two kit bag

- 1 containing field clothing (65x50x40cm)
- 1 containing lab coats



Six roll up banners
Size: 130x15x15cm